



Colorchart



# ARCHITECTURE

## STANDARD FINISHES

# Bold Ideas Require Bold Finishes



In the architecture and building market, nothing's more important than a bold idea being implemented successfully. That's why around the world, architects rely on Reynobond® and Reynolux® panels to amplify the visual impact of their ideas. Offering long-term, cost-effective, consistent solutions, these panels are durable, weather resistant, lightweight, flexible, and easy to fabricate and maintain. They're available in a nearly limitless array of stock and custom finish options.

Use this color chart for a closer look at our standard color offerings (stocked as Reynobond panel inventory, pre-finished coil\* and 0.40" Reynolux flat sheet), and envision a world of possibilities for making your next bold idea even bolder. Plus, if you don't immediately see the color you need, our custom color matching will get you exactly where you need to be.

## Colorweld® 500/500XL Finishes

High-performing, coil-coated Colorweld 500 and Colorweld 500XL finishes allow color matching at the highest uniformity and quality. They feature 70% Kynar 500®/Hylar 5000® polyvinylidene fluoride (PVDF) resins with fluoropolymer technology, providing excellent flexibility and film adhesion for forming, with superior resistance to humidity, impact, salt spray, pollution and abrasion. With a 30-year finish warranty, they're considered the premier architectural coatings for metal. And, because Colorweld 500XL finishes are compatible with PPG's DURAPREP® Prep™ 400 graffiti remover system, your designs can be protected from graffiti and vandalism in any environment.

## Design Line™ Nature-Inspired Finishes

Inspired by Mother Nature, our Design Line finish system offers a variety of striking, natural-material-based design choices that feature all the benefits of Reynobond aluminum composite material. These 3-coat advanced polymer coatings resist sun, extreme temperatures and even saltwater, making them ideal for outdoor applications.

## PrismFX™ Color-Shifting Finishes

PrismFX finishes can give your building a look as dynamic as your design. This 3-coat innovative coating creates subtle color shifts in different lighting conditions when viewed from different angles, so a building that appears green, blue or silver in the morning can shift to copper, violet or gold in the afternoon. Excellent flexibility and film adhesion for forming are delivered by this high-performance paint system, while also being resistant to humidity, impact, salt spray, pollution and abrasion, making it suitable for all outdoor architectural applications and a wide range of other specialty uses.

## Natural Metal Offerings

Our natural metal composite panels give you all the functional benefits of Reynobond panels along with the aesthetic impact that can only come from nature's finest elements. Our brushed aluminum and stainless steel give you bold options for interior and exterior walls and accents, while allowing you to incorporate curves, angles and other design elements not possible with heavy plate and sheet.

### Stay Up to Date on Stock

Visit [reynobond.com/stockinglist](http://reynobond.com/stockinglist) for our current listing of standard color offerings. Check back often as we adjust our finishes and sizes to meet your demands.

### Custom Color Matching Services

Don't see the color you're looking for? We can help match any color you desire. Email your custom color match request to [color.matching@arconic.com](mailto:color.matching@arconic.com) and see the possibilities of high-performing color matches for Reynobond and Reynolux panels.

### Request a Sample

To receive a sample of any of the finishes shown within this booklet, please call 800.841.7774 and ask for our Sample & Literature Department. If you prefer, you can email your request to [samples.literature@arconic.com](mailto:samples.literature@arconic.com).

\*Used to produce Reynobond panels

## Colorweld® 500

30-year warranty

AAMA 2605

### SERIES ONE

Standard Solid Finishes

All Colorweld 500 Series One finishes, with the exception of Eastman Blue, are stocked in 62"-wide coil and are available in 0.040" x 48" Reynolux flat sheet.



Bone White

25-35\*  
68.7<sup>1</sup>, 82<sup>2</sup>, 74<sup>3</sup>



Brite Red

25-35\*  
39.4<sup>1</sup>, 42<sup>2</sup>, 10<sup>3</sup>



Cadet Gray

25-35\*  
35<sup>1</sup>, 36<sup>2</sup>, 34<sup>3</sup>



Castle Gray

25-35\*  
49.4<sup>1</sup>, 56<sup>2</sup>, 41<sup>3</sup>



Pueblo Tan

25-35\*  
51.7<sup>1</sup>, 60<sup>2</sup>, 48<sup>3</sup>



Deep Black

20-30\*  
4.5<sup>1</sup>, 0<sup>2</sup>, 5<sup>3</sup>



Frisco White

25-35\*  
69.1<sup>1</sup>, 83<sup>2</sup>, 75<sup>3</sup>



Eastman Blue

45-55\*  
37<sup>1</sup>, 36.2<sup>2</sup>, 17<sup>3</sup>



Oyster White

25-35\*  
67.4<sup>1</sup>, 81<sup>2</sup>, 67<sup>3</sup>



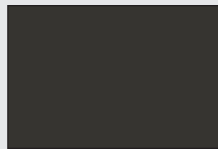
Classic Bronze

20-30\*  
9.8<sup>1</sup>, 2<sup>2</sup>, 7<sup>3</sup>



Pure White

25-35\*  
69.4<sup>1</sup>, 83<sup>2</sup>, 75<sup>3</sup>



Charcoal

25-35\*  
28.6<sup>1</sup>, 28<sup>2</sup>, 8<sup>3</sup>



Limestone

25-35\*  
66<sup>1</sup>, 56.5<sup>2</sup>, 73.99<sup>3</sup>



Sandstone

25-35\*  
82<sup>1</sup>, 68.6<sup>2</sup>, 73.7<sup>3</sup>

## Colorweld® 500

30-year warranty

AAMA 2605

### SERIES TWO

Premium Mica Finishes

All Colorweld 500 Series Two finishes are stocked in 62"-wide coil and are available in 0.040" x 48" Reynolux flat sheet.



Pewter

15-25\*  
14.6<sup>1</sup>, 10<sup>2</sup>, 19<sup>3</sup>



Platinum

20-30\*  
59.3<sup>1</sup>, 70<sup>2</sup>, 57<sup>3</sup>



Silversmith

15-30\*  
58.1<sup>1</sup>, 68<sup>2</sup>, 52<sup>3</sup>



Vancouver Copper

15-25\*  
47.4<sup>1</sup>, 53<sup>2</sup>, 28<sup>3</sup>



Daybreak Mica

15-25\*  
35.9<sup>1</sup>, 38<sup>2</sup>, 38<sup>3</sup>



Medium Bronze

15-25\*  
63<sup>1</sup>, 75<sup>2</sup>, 57<sup>3</sup>



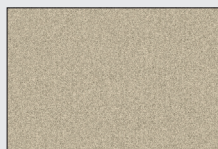
Champagne Mica

15-25\*  
29.5<sup>1</sup>, 30<sup>2</sup>, 21<sup>3</sup>



Driftwood Mica

15-25\*  
9.2<sup>1</sup>, 3<sup>2</sup>, 7<sup>3</sup>



Anodic Satin

20-30\*  
53.6<sup>1</sup>, 61<sup>2</sup>, 39<sup>3</sup>



Anodic Clear

20-30\*  
56.2<sup>1</sup>, 65<sup>2</sup>, 54<sup>3</sup>



Anodic Bronze

15-25\*  
42.9<sup>1</sup>, 47<sup>2</sup>, 23<sup>3</sup>

Anodic finishes are formulated to closely resemble popular anodized colors used on curtain wall profiles.

## Colorweld® 500XL

30-year warranty

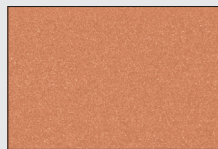
AAMA 2605

### SERIES THREE

Premium 3-coat Metallic Finishes

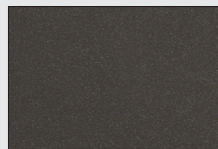
Compatible with PPG's DURAPREP® Prep™ 400 graffiti-resistant coating.

All Colorweld 500XL Series Three finishes are stocked in 62"-wide coil and are available in 0.040" x 48" Reynolux flat sheet.



Copper Penny

25-35\*  
44.4<sup>1</sup>, 48<sup>2</sup>, 24<sup>3</sup>



Nightfall Metallic

20-30\*  
11.1<sup>1</sup>, 2<sup>2</sup>, 8<sup>3</sup>



Bright Silver Metallic

15-30\*  
61<sup>1</sup>, 70<sup>2</sup>, 61<sup>3</sup>



Champagne Metallic

25-35\*  
54.3<sup>1</sup>, 61<sup>2</sup>, 52<sup>3</sup>



Titanium

25-35\*  
44.2<sup>1</sup>, 47<sup>2</sup>, 44<sup>3</sup>

Environment-friendly cool-pigment finish.

\* Specular Gloss Reading

<sup>1</sup> Solar Reflectivity Value (SRV); ASTM C1549

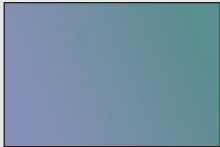
<sup>2</sup> Solar Reflective Index (SRI); ASTM E1980

<sup>3</sup> Light Reflectance Value (LRV); ASTM E1477

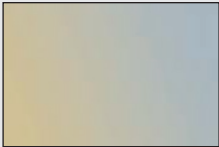
reynobond.com  
reynobond.com/stockinglist

PrismFX™  
(Duragloss® PFX)  
Premium Finishes

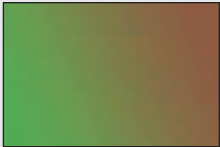
20-year warranty  
AAMA 2604



Indian Summer



Silver Gold



Spring Lake

Design Line™  
(Duragloss® DL)  
20-year warranty  
AAMA 2604

WOOD  
Premium Finishes



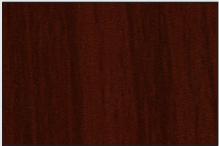
Colonial Red



Embala Brown



Italian Walnut



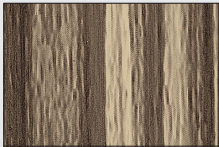
Mahogany Brown



Scottish Oak



Sunny Pear



Zebra

MINERAL  
Premium Finishes



Terra di Siena



Terra Cotta Mineral

PATINA  
Premium Finishes



Copper Patina

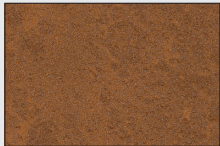


Rust Patina



Zinc Patina

STONE  
Premium Finishes



Aciero Corten



Apollo Stone



## Natural Metals

### Premium Metals

The appearance of our Natural Metals may vary with the lot of production.



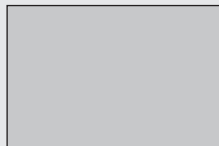
Stainless Steel



## Anodized

### Premium Coating

The appearance of our Anodized panels may vary with the lot of production.



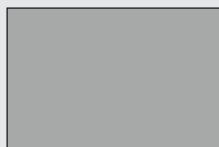
Clear Anodized

## Colorweld® LF (Clear Coat)

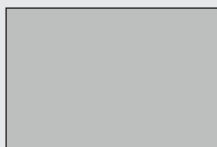
### 20-year warranty

Compatible with PPG's DURA-PREP® Prep™ 400 graffiti-resistant coating.

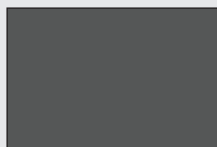
The appearance of our Colorweld LF finishes may vary with lot of production.



Long Brushed  
Aluminum  
30\*



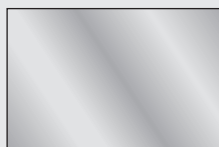
Natural Brushed  
Aluminum  
30\*



Natural Brushed  
Aluminum Gray  
30\*

## Colorweld® Brite (Clear Coat)

### 10-year reflection warranty



Brite Mirror  
87% Reflectivity

## Finish Performance Properties

Property	Test Method	Colorweld® 500 Opaque/ Mica	Colorweld® 500 XL Metallic	Duragloss® PFX (PrismFX™)	Duragloss® DL (Design Line™)	Colorweld® LF
Specular Gloss (60)	ASTM D523	15-35	25-35	20-60	20-60	<10-80
Gloss Retention	ASTM D523	N/A	N/A	N/A	N/A	20 yrs FLA >80%
Pencil/Film Hardness	ASTM D3363	F-2H	F-2H	F min	F min	F-2H
Coating Flexibility (T-bend)	ASTM D4145	1-T to 2-T; No pick off	1-T to 2-T; No pick off	1-T to 2-T; No pick off	1-T to 2-T; No pick off	1-T to 2-T; No pick off
Reverse Impact (1.5 thickness)	ASTM B2794	Passes	Passes	Passes	Passes	Passes
Salt Spray Resistance 5% Salt Fog @ 95° F	ASTM B117	Passes 4000 hrs	Passes 4000 hrs	Passes 3000 hrs	Passes 3000 hrs	Passes 4000 hrs
Humidity Resistance 100% RH @ 100° F	ASTM D2247	Passes 4000 hrs	Passes 4000 hrs	Passes 1000 hrs	Passes 1000 hrs	Passes 4000 hrs
Color Retention @ 45°, South Florida	ASTM D2244	10 years, Max 5 fade	10 years, Max 5 fade	5 years, Max 5 fade	5 years, Max 5 fade	10 years, Max 5 fade
Chalk Resistance @ 45°, South Florida	ASTM D4214	10 years, >8 chalk	10 years, >8 chalk	5 years, >8 chalk	5 years, >8 chalk	N/A
Film Thickness	ASTM D1400	0.2 mil primer 0.8 mil top coat	0.2 mil primer 0.8 mil color coat 0.5 mil clear coat	0.6 mil primer 0.8 mil base coat 0.7 mil top coat	0.6 mil primer 0.8 mil base coat 0.7 mil top coat	0.6-0.7 mil clear coat

Disclaimer:

Laws and building and safety codes governing the design and use of AAP's products, and specifically aluminum composite materials, vary widely. It is the responsibility of the owner, the architect, the general contractor, the installer and the fabricator/transformer, consistent with their roles, to determine the appropriate materials for a project in strict conformity to all applicable national, regional and local building codes and regulations. REYNOBOND IS COMBUSTIBLE; IT COULD CATCH FIRE AND BURN. SEE AAP WEBSITE FOR PRODUCT WARNINGS. ANY LABORATORY TESTING INFORMATION PROVIDED BY AAP APPLIES ONLY TO THE PARTICULAR PRODUCT OR ASSEMBLY TESTED AND DOES NOT NECESSARILY REPRESENT HOW PRODUCTS WILL ACTUALLY PERFORM IN USE.



©2017 Arconic Architectural Products LLC. Reynobond®, Reynolux®, Colorweld® and Duragloss® are registered trademarks and Design Line™ and PrismFX™ are trademarks of Arconic Inc. Kynar 500® is a registered trademark of Arkema Group. Hylar 5000® is a registered trademark of Solvay Solexis. DuraPrep® is a registered trademark and Prep™ is a trademark of PPG Architectural Finishes, Inc.

17AAP1357-A Apr 2017 ver. 2

Arconic Architectural Products LLC

50 Industrial Boulevard

Eastman, GA 31023-4129

Tel. 800 841 7774

reynobond.com or reynolux.com